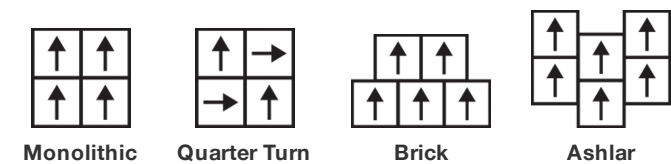


Dye Lab Tile

Product Type	Carpet Tile	
Collection	Dye Lab	
Style Number	5T041	
Construction	Cut Pile	
Fibre	Ecosolution Q100™ Nylon	
Primary Backing	Synthetic	
Secondary Backing	Ecworx® Tile	
Protective Treatments	SSP® Shaw Soil Protection	
Recommended Adhesive	LokDots, 3000 Carpet Tile 1 Gallon, 4151 Multi-Use Carpet Tile 4 Gallon, 5000 Carpet Tile 1 Gallon, LokWorx Adhesive Tabs, 3800 Indoor Outdoor Carpet Tile 4 Gallon, 5000 Carpet Tile 4 Gallon or 3000 Carpet Tile 4 Gallon	
	u.s.	metric
Product Size	24 in x 24 in	61 cm x 61 cm
Area Per Box	48 ft²	4.46 m²
Pieces Per Box	12 pcs	
Gauge	1/10 in	39.4 per 10 cm
Stitches	10.5 per in	42.5 per 10 cm
Average Density	7406 oz/yd³	0.274 g/cm³
Kilotex		10.11
Total Thickness	0.330 in	8.38 mm
Tufted Weight	36 oz/yd²	1220.6 g/m²



Recommended Installation Method



Data + Testing

Radiant Panel (Astm E648)	Class I
Nbs Smoke	Less Than 450
Electrostatic Propensity	Less Than 3.5 kv
Cri Green Label Plus (Glp)	GLP5563
Pill Test	Pass*
Ada Compliance	>0.6, Meets the recommended static coefficient of friction for ADA walking surfaces and accessible routes***

Test Reports may be included or listed by the manufacturing/inventory style number as opposed to the noted selling style number.

Warranties

Lifetime Commercial Limited

Attributes + Certifications

Certifications Below Apply Exclusively To The Carpet Tile Rug Itself And Not The Lokworx Tabs Adhesive

Health & Wellbeing

Material Ingredient Transparency

Cradle to Cradle Certified® | Silver Level (Version 4.0)
Health Product Declaration (HPD) | 1,000 ppm Disclosure
Living Building Challenge (LBC) | Free of Red List Chemicals
Declare | LBC Compliant
NSF 140 | Gold
CRI Green Label Plus (GLP) | GLP5563

Indoor Air Quality

Climate Impact

Environmental Product Declaration (EPD)
Embodied Carbon (Cradle to Gate)
Life-Cycle Carbon Emissions
Total Recycled Content
Product Packaging

3rd Party Certified in Accordance with ISO14044, ISO14025 & EN15804
5.72 kg CO₂/m²
Carbon Neutral
66% (Pre-Consumer 66% | Post-Consumer 0%)
100% Recyclable

Global Product Assessment

Singapore Green Label | Certified
CE Marking (EN 14041) | 3rd Party Certified
Environmental Guarantee* | Re[turn] Reclamation Program* | Through Our Environmental Guarantee, Shaw Pledges to Transport And Recycle Any Ecoworx Carpet.
Country of Origin** | USA

Leed Contribution Credit

MR Credit: Building Product Disclosure and Optimization
Environmental Product Declarations - Option 1: Environmental Product Declaration (EPD)
MR Credit: Building Product Disclosure and Optimization
Material Ingredients - Option 1: Material Ingredient Reporting
MR Credit: Building Product Disclosure and Optimization
Material Ingredients - Option 2: Material Ingredient Optimization
MR Credit: Building Product Disclosure and Optimization
Sourcing of Raw Materials - Option 2: Leadership Extraction Practices
EQ Credit: Low Emitting Materials
Option 1: Product Category Calculations
MR Credit: Interiors Life-Cycle Impact Reduction
Option 3: Design for Flexibility

3rd Party Certified in Accordance with ISO14044, ISO14025 & EN15804

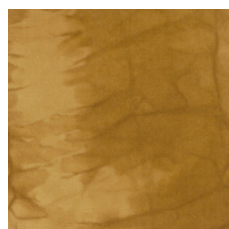
HPD (Version 2.1) or C2C Silver Level (Version 4.0)

C2C Silver Level (Version 4.0)

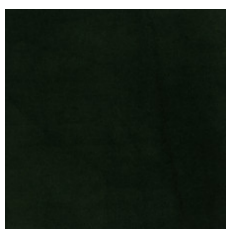
Environmental Guarantee: Re[turn] Reclamation Program* | Through Our Environmental Guarantee, Shaw Pledges to Transport And Recycle Any Ecoworx Carpet.
Green Label Plus Certification: GLP5563

Ecoworx Tile with Lokdots Installation System

Available Colorways



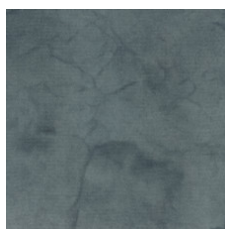
Osage Orange 41202
LRV 17.2 (range 12.4 - 21.5)



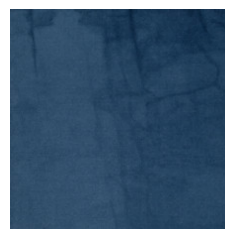
Fustic Wood 41316
LRV 3 (range 2.8 - 3.2)



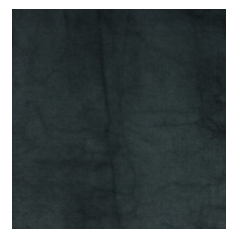
Fustic Saxon 41396
LRV 8.8 (range 6.6 - 10.4)



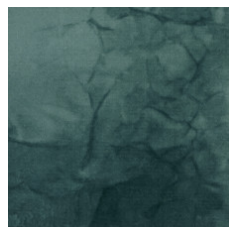
Black Walnut 41402
LRV 12.7 (range 11.6 - 14.6)



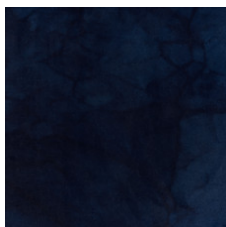
Saxon 41462
LRV 5.7 (range 3.8 - 7.6)



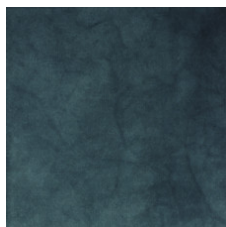
Cornflower 41480
LRV 4.8 (range 3.1 - 6.3)



Knotweed 41491
LRV 12.0 (range 10.6 - 12.8)



Indigo 41496
LRV 2.9 (range 2.1 - 3.7)



Woad 41497
LRV 4.0 (range 2.6 - 5.5)



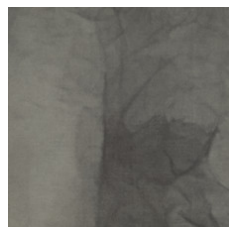
Sumac 41504
LRV 9.2 (range 6.4 - 11.8)



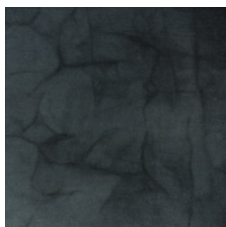
Logwood 41505
LRV 3.1 (range 2.2 - 4.3)



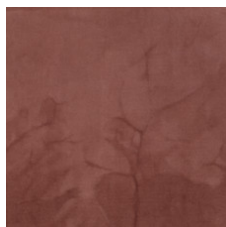
Black Tea 41516
LRV 10.1 (range 8.8 - 11.9)



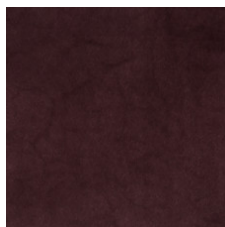
Henna 41535
LRV 12.6 (range 10.7 - 13.8)



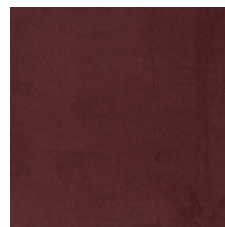
Iron 41580
LRV 6.8 (range 4.7 - 8.4)



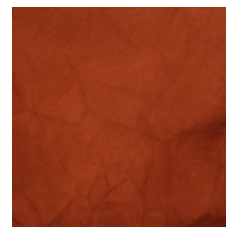
Sandalwood 41665
LRV 13.2 (range 11.7 - 15)



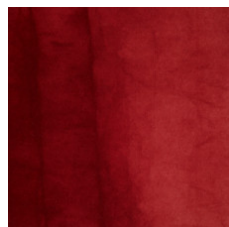
Lac 41762
LRV 3.5 (range 2.8 - 4.2)



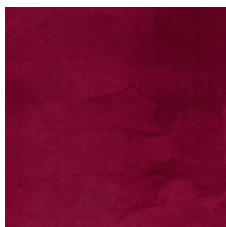
Brazil Wood 41855
LRV 2.8 (range 2.1 - 3.3)



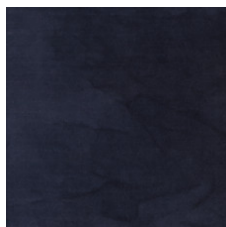
Madder Root 41864
LRV 7.7 (range 5.1 - 9.3)



Cochineal 41880
LRV 4.9 (range 3.3 - 6.6)



Beet 41890
LRV 5.3 (range 4.8 - 6)



Iris 41965
LRV 3.8 (range 2.7 - 4.8)

Additional Information

* To learn more about the recyclability of our products and our re[TURN], please visit shawcontract.com/sustainability.

**Meets or exceeds all local and national regulations in country of manufacture.

***This carpet is manufactured to be ADA compliant, but to be fully ADA compliant, the end-user must ensure the carpet is adhered to the floor and installed as outlined in the ADA standards.

[Installation Guidelines](#)

[Maintenance Guidelines](#)

Specifications are subject to nominal manufacturing variance. Material supply and/or manufacturing processes may necessitate changes without notice.

This product is an exclusive design and may not be duplicated in any manner. Use of this design in the creation of another product design is also strictly prohibited.

Visit shawcontract.com/testing for more information.

Corporate Headquarters +1 800 257 7429 | +1 706 532 7984 | Atlanta +1 404 853 7429 | Bengaluru +91 80 6773 0202 | Beijing +86 10 6568 588 | Chicago +1 312 467 1331 | Dubai +971 4 584 6956 | Hong Kong +852 2623 0371 | Latin America (Miami) +1 305 827 5912 | London +44 207 961 4120 | Los Angeles +1 800 233 1614 | Melbourne +61 3 9939 8543 | Mexico City +55 5010 7600 | Mumbai +91 22 6284 5050 | Nantong +86 400 800 7429 | New York +1 212 953 7429 | Paris +33 (0) 1 81 22 44 39 | San Francisco +1 415 955 1920 | Santiago +562 2431 5000 x 550 | São Paulo +55 11 3071 1702 | Shanghai +86 21 3338 4000 | Singapore +65 6733 1811 | Sydney +1 800 556 302

© 2024 Shaw Industries Group, Inc., a Berkshire Hathaway Company
May 8, 2024

3 of 4

